

D. ELECTRON

Since 1977 Hi - Tech
for the Machine - Tool

WinNFZ – Version 2

Z32 File Exchange

USER MANUAL

Document M261

C0 – 12.07.2007

Read thoroughly before installation

Contains important information on:

- installation and operation
- safety
- applicable standards

This manual contains information exclusively devoted to the user of D.Electron products to allow a correct usage of delivered devices. No part of this manual can be duplicated or delivered to third parties for an usage not corresponding to that indicated. All information here contained have been accurately checked to be exact and reliable, but D.Electron doesn't assume any responsibility for possible inaccuracies. D.Electron reserves the right to make all modifications necessary to improve the performance and reliability of its products.

**D.Electron - Via R. Giuliani 140 - 50141 Firenze ITALY Internet: www.delectron.it
Tel ++39 - 055 - 416927 Fax ++39 - 055 - 434220 email delectron@delectron.it**

CONTENTS

1.	DESCRIPTION	1
2.	INSTALLATION	1
3.	DEINSTALLATION.....	1
4.	PROGRAM USAGE.....	1
5.	SUPPORTED OPERATIONS	3

1. DESCRIPTION

WinNFZ is a program developed for the Microsoft Windows operating system family, and allows file exchange to/from a Z32 machine, through the FastCodos protocol.

WARNING

This information may depend on the installed Z32 software version and may be no more valid in case of software changes. Please verify all software updates published after the date of this manual.

2. INSTALLATION

Minimum system requirements necessary for WINNFZ operation.

- Pentium processor 150 MHz or higher
- Windows 2000 Professional, NT Workstation 4.0 (Service Pack 4 or later)
- 32 Mb for NT 4.0
- 64 Mb for Windows 2000 Professional
- 10 Mb free disk space
- Floppy-Disk unit (for diskette distribution).
- CD-ROM unit (for CD distribution).

Insert the support in the appropriate unit (CD or floppy), select 'Run' from the Windows Start menu, digit <unitname>:\SETUP.EXE and press Enter.

The installation procedure starts, and it is sufficient to follow the simple instructions displayed on the screen.

In case the program is part of a program suite, please follow the instructions of the suite.

3. DEINSTALLATION

The following information apply when WinNFZ is distributed as a stand-alone application.

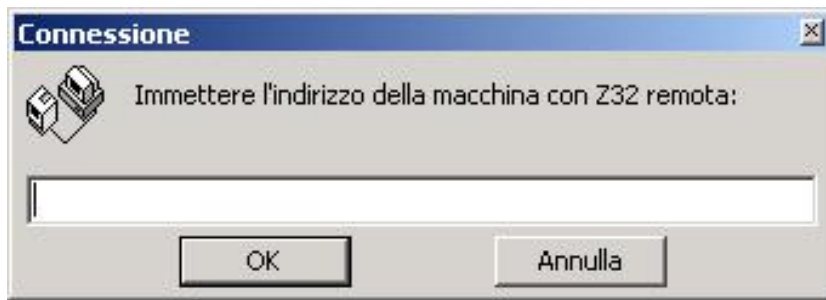
From the Windows Start menu, select: Settings → Control Panel → Add/Remove Applications.

Select 'WinNFZ' from the applications list and press the pushbutton 'Remove'.

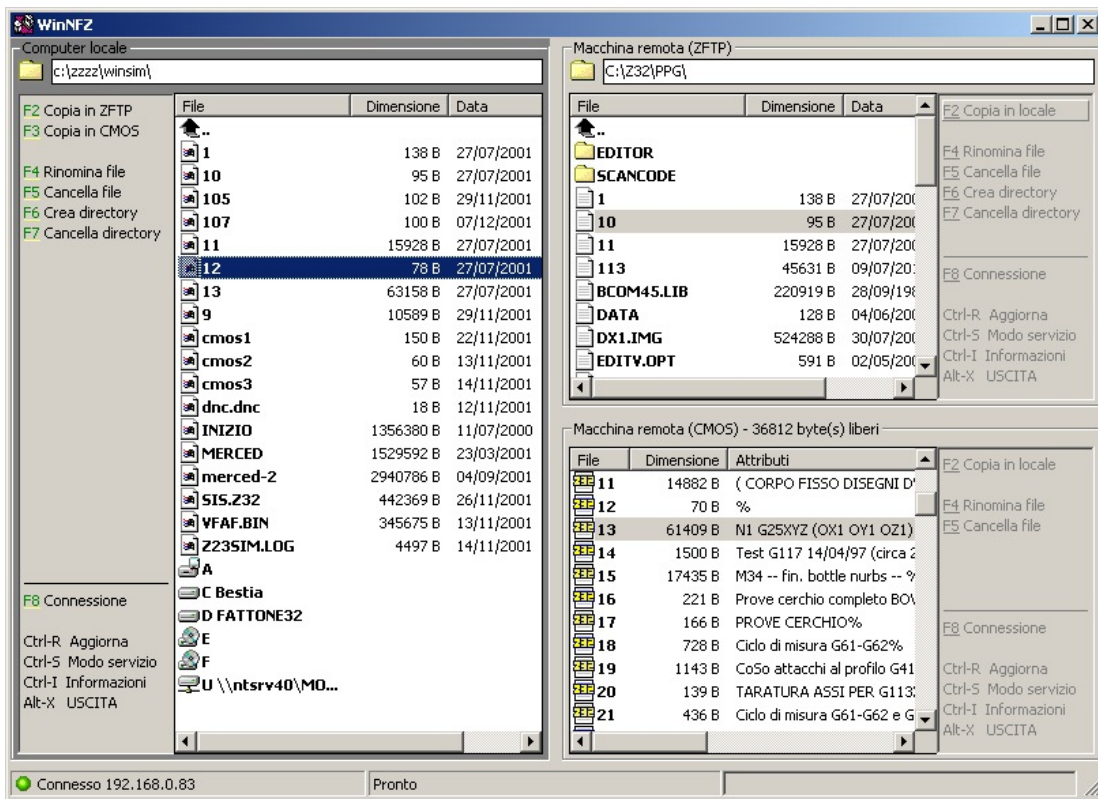
Follow the instructions on the screen. At the end of the procedure, WINNFZ will be completely removed from the system.

4. PROGRAM USAGE

Once started, the program shows a window requesting the connection address, where the IP address of the remote Z32 machine must be input (to connect to the same machine, insert "localhost" or "127.0.0.1"):



In case a default address has been previously specified, the connection request will be not shown, and the main window will be immediately displayed. In every case, the connection with the remote system is established. The WinNFZ interface has the following aspect:



The program is composed by three distinct areas, each having its own menu. The window may be divided in three parts:

- On the left, the local machine is represented (i.e. the computer executing the application, in the following discussion indicated as LOCAL machine).
- On the right upper portion, the mass memory of the remote machine is represented (in the following indicated as ZFTP). The working directory is set to "C:\Z32\PPG", representing also the "root" directory (the user cannot access folders not children of "C:\Z32\PPG"), except if the Service mode is enabled.
- On the low right portion, all not reserved files present in the remote machine CMOS memory (in the following indicated as CMOS) are listed (1-127 if service mode is not enabled).

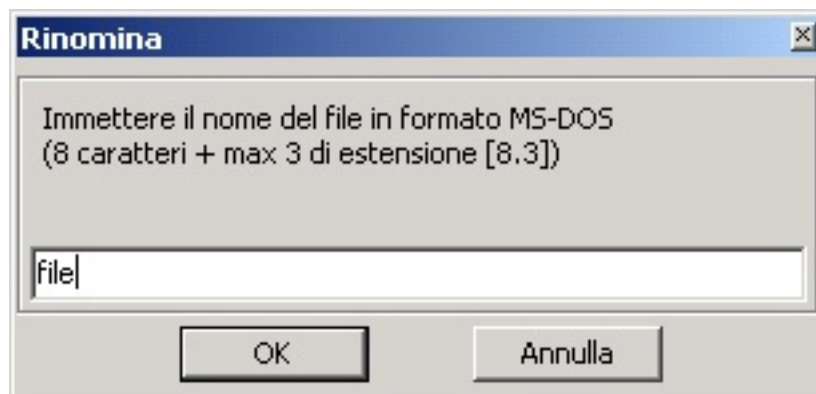
For each file attributes like date, size, etc. are also listed. The files are ordered by name and the display is made inserting in a single list, in the order specified, folders, files and drives (CMOS lists only files, and the remote machine allows to display only the C: drive).

The area currently selected has a dark border (in the sample figure above it is ZFTP), and it possible to switch between the areas by pressing the TAB key.

The three menu refer to the three different working areas and the possible actions are executed on the currently selected file (inside the active area).

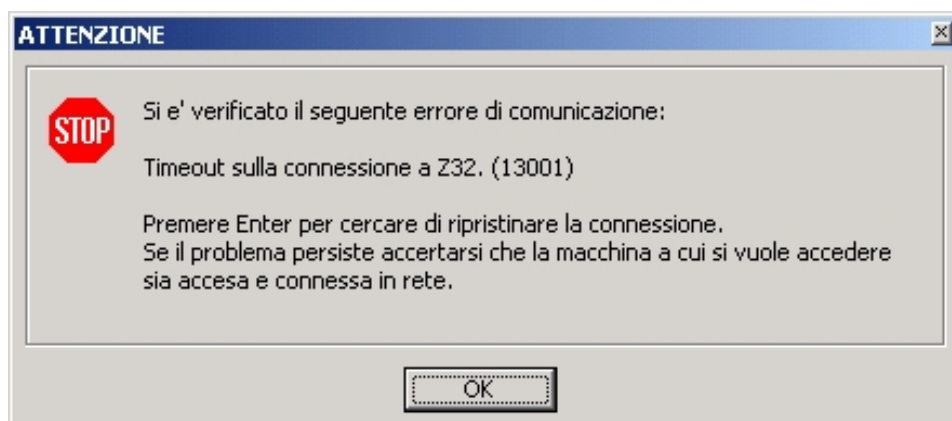
It is possible to execute delete and rename file operations, as well as transfer (copy) operations to different working areas; it is therefore possible to copy a file from/to LOCAL to/from ZFTP and from/to LOCAL to/from CMOS (it is not allowed a direct file exchange between ZFTP and CMOS).

In the copy operation, the destination file name is always requested (according to the system present), and the transfer operation evolution may be observed through the program status bar.



The menu item "Reconnect" is present in all working areas, allowing the connection to a new machine.

In case of transfer errors, WinNFZ notify the user with a dialog window similar to the following, indicating the error code. If present, carefully follow all indications contained in this window:



Files with Hidden or System attribute are not listed in LOCAL nor in ZFTP. These files may be displayed only in service mode, password protected, available only to service technicians.

5. SUPPORTED OPERATIONS

The following operations are supported:

- Multiple copy from LOCAL to ZFTP
- Multiple copy from ZFTP to LOCAL
- Multiple copy from LOCAL to CMOS
- Multiple copy from CMOS to LOCAL
- Multiple delete in LOCAL
- Multiple delete in ZFTP
- Multiple delete in CMOS
- Multiple rename in LOCAL
- Multiple rename in ZFTP
- Multiple rename in CMOS
- Directory creation in LOCAL
- Directory creation in ZFTP
- Multiple directory removing (empty) in LOCAL
- Multiple directory removing (empty) in ZFTP